

# From Camera to Screen

*And Stops in Between*

*Tony Mistretta*

*10-9-2008*

# Overview

- Image Capture
- Backups
- Image Transfer
- File Organization
- Raw Conversion
- Image Editing
- Image Sizing
- Image Saving



# Image Capture – Picture Cards

- Have enough picture cards so that you are not constantly re-using them
- A high-quality/speed 4gb card costs about \$50 and will hold approx. 260 pictures in raw + small jpeg format (12 mpx camera)
- Label all of your picture cards with name, phone number, and a letter or number that enables you to distinguish one from another
- Always check the contents of your picture cards before formatting
- Format cards with camera, not computer, at home before you shoot

# Image Capture - Raw or Jpeg?

## Raw

- Digital negative (lossless)
- Much more information
- Much more storage space
- Needs to be processed
- Able to make exposure & color corrections
- 12 bit file = 4096 levels of brightness
- Many different RAW formats
- Image capture is slower than jpeg

## Jpeg

- All processing is done in camera according to camera settings
- Compressed format
- Ready to use or show
- No need for a computer
- Limited ability to make corrections
- 8-bit file = 256 levels of brightness
- One universal jpeg format
- Image capture is faster

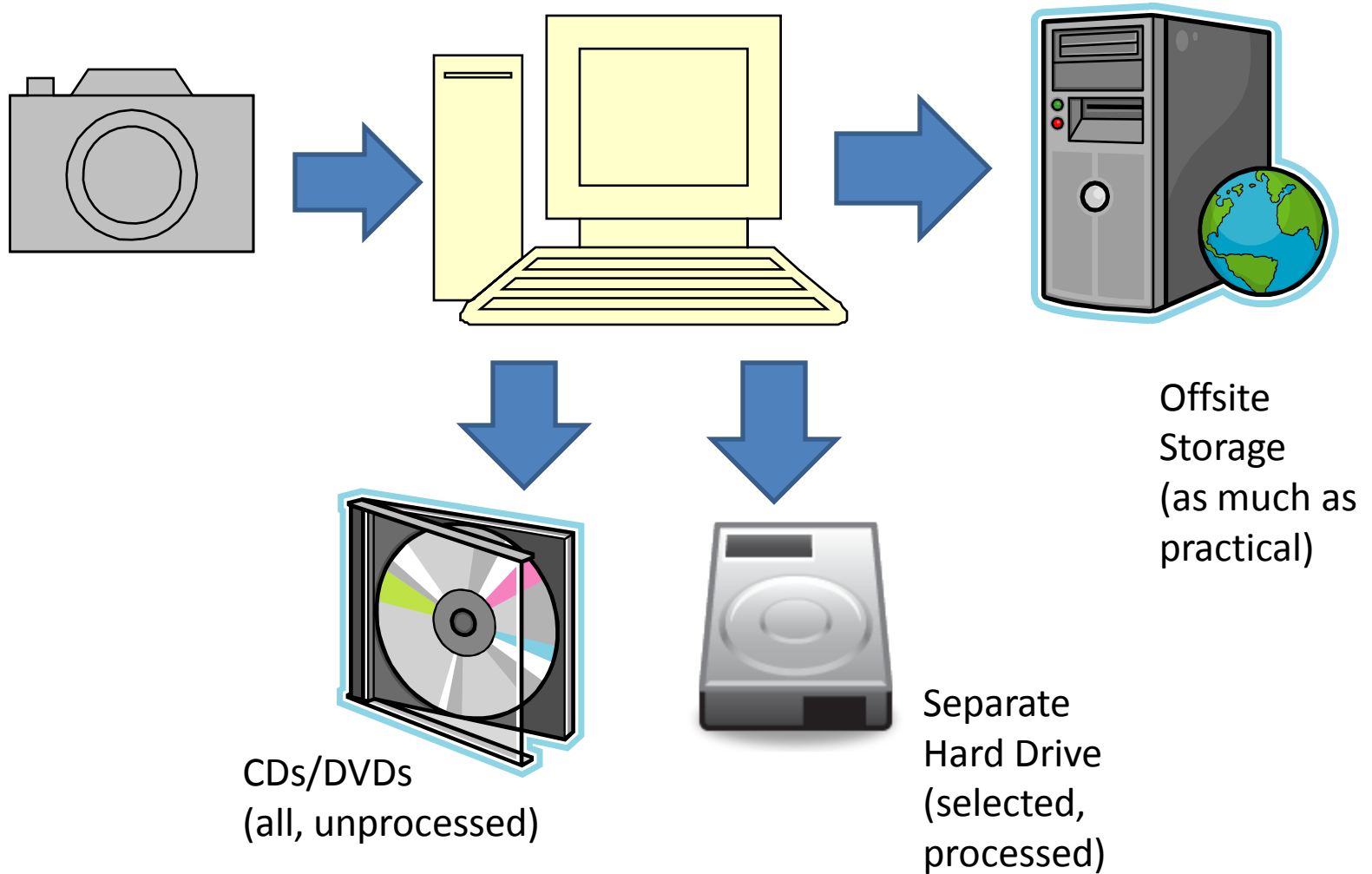
# Image Capture – RAW or Jpeg?

- Recommendation: Use both (Raw + Small Jpeg), except where capture speed or storage capacity is an issue.
- If you want the best quality and ability to make modifications, use RAW.
- If you're in a hurry and/or don't want to bother with computer processing, use Jpeg.

# Backups

- Can't have too many backups
- Backup as soon as possible before any image processing
- Portable backup drives/laptop computers for use in the field/travel
- CD-Rs & DVD-Rs are the best primary backup, but may deteriorate over time. CD-RWs and DVD-RWs are not good for this purpose.
- Label your CDs/DVDs with description, date(s), file numbers – store in a safe organized manner
- Backup your computer files to a separate hard drive
- Backup to an offsite storage service like Mozy ([www.mozy.com](http://www.mozy.com), unlimited backup for \$5 per month)

# Backups



# Image Transfer

- Connect camera to computer and use camera software, or...
- Purchase and use a separate card reader
- Use Windows Explorer to view and select what files to upload to your computer
- Microsoft has a raw file viewer plug-in for Windows XP





# File Organization

- Organize your picture files in folders and sub-folders within “My Pictures” directory
- Organize by year and by descriptive category within year
- Don’t allow programs to save your files in default locations – You decide where they should go!!!
- Become familiar with Windows file search capabilities

# Raw Conversion



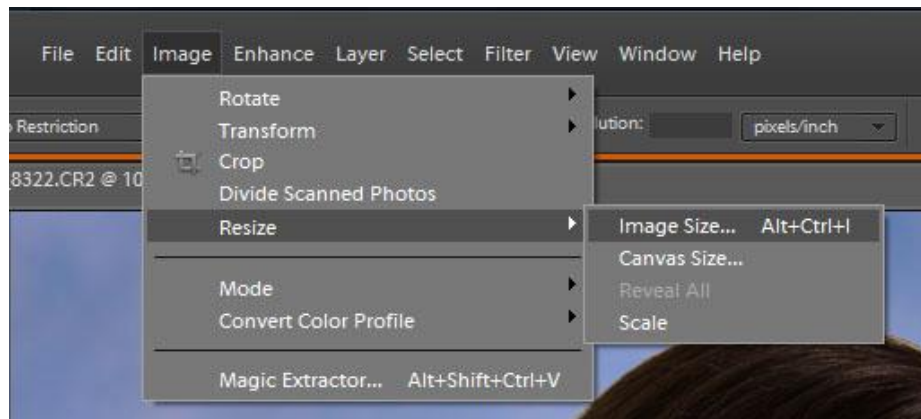
Camera Raw dialog box A. View options B. Click the Basic or Detail tab to access different controls C. RGB values D. Histogram E. Image settings F. More menu G. Camera and some EXIF information H. Tools I. Rotate buttons J. Zoom levels K. Bit depth options

# Image Editing

- Most total image adjustments can be done in Raw conversion
- Selective adjustments can be done in the Photoshop Elements Editor
- Become familiar with tools & palettes
- Learn by doing
- Use online help when needed
- An instruction book makes a good reference

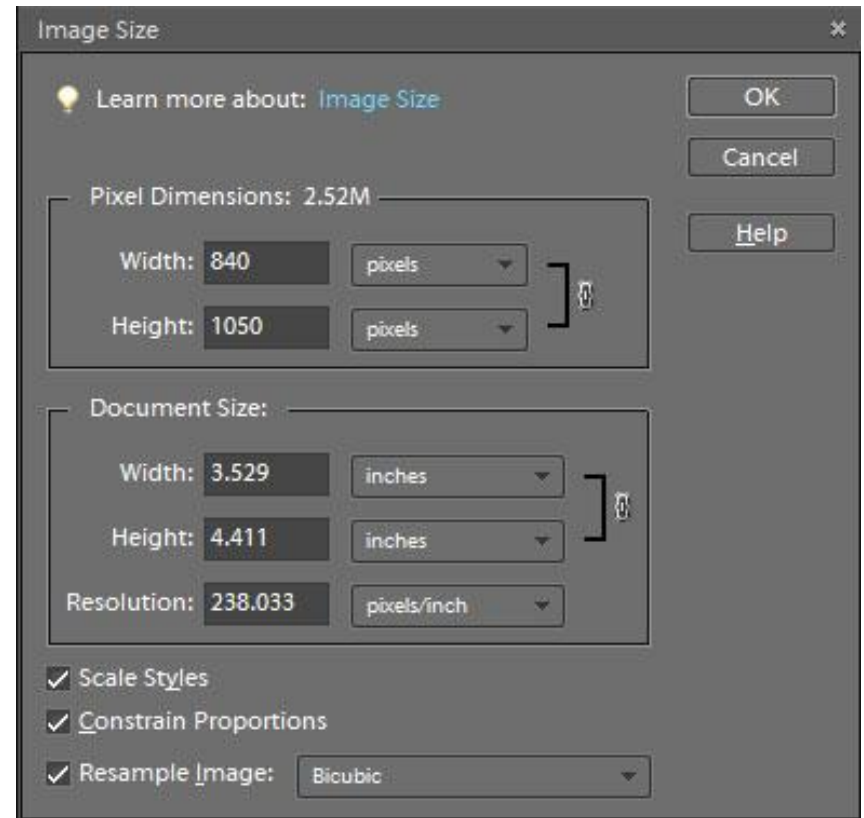
# Image Sizing

- From menu, select Image, Resize, Image Size..., or Alt-Ctrl-I



# Image Sizing for SBCC

- Check all three boxes below
- Use Bicubic resampling method
- Set pixel dimensions to desired size constraints (1400 x 1050)
- Don't worry about document size – that's for printing

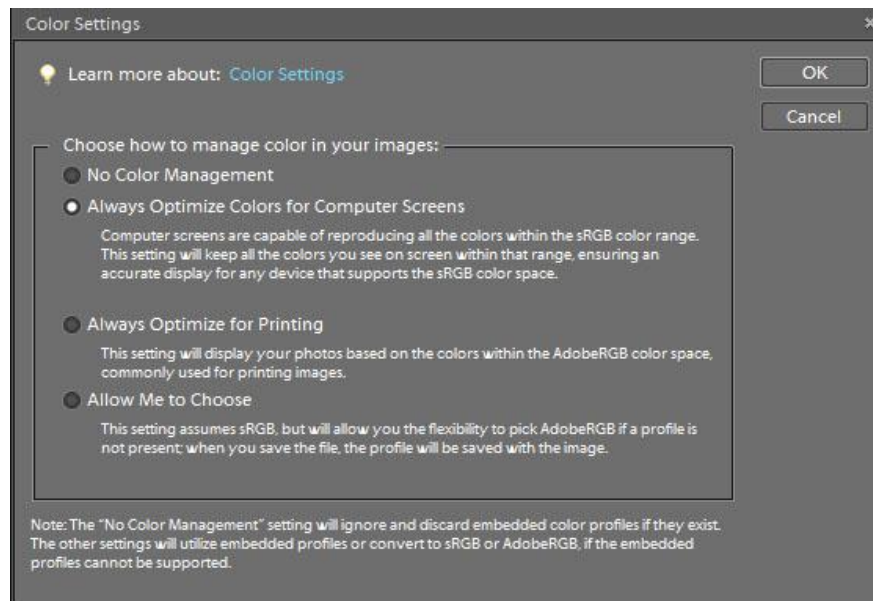


# Aspect Ratios

- 35mm film = 24mm x 36mm = 2:3
- 1400 x 1050 = 4:3
- 8 x 10 portrait = 4:5

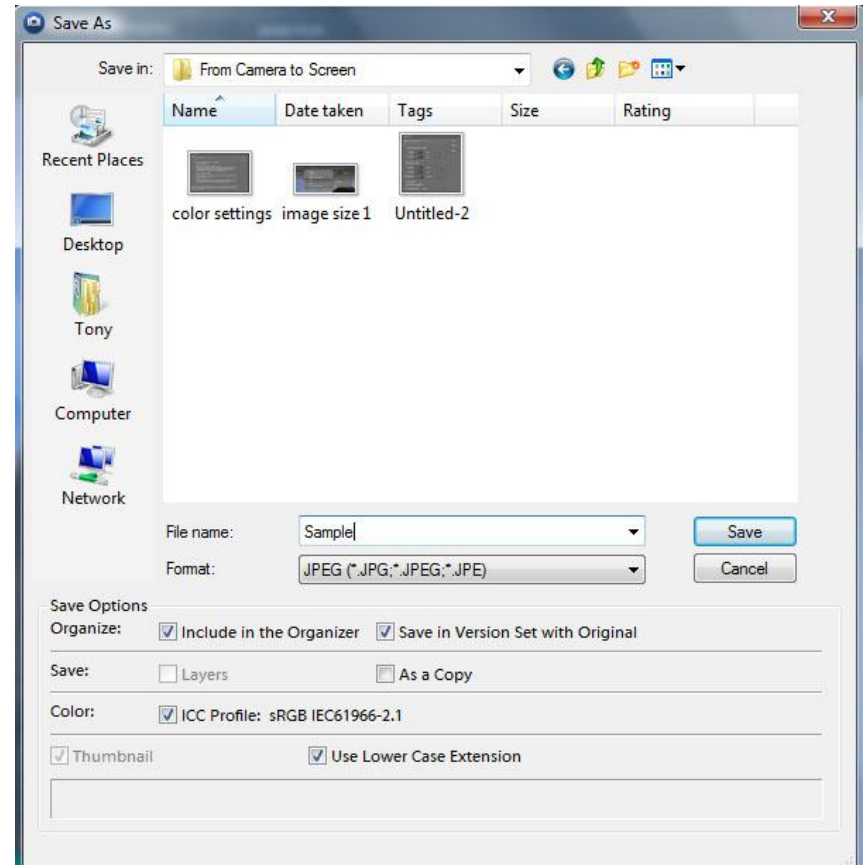
# Image Saving

- If saving to display on SBCC projector, make sure your color space is sRGB
- To check or convert, from Menu, Select Image, Convert Color Profile
- These can be set under Edit, Color Settings



# Image Saving

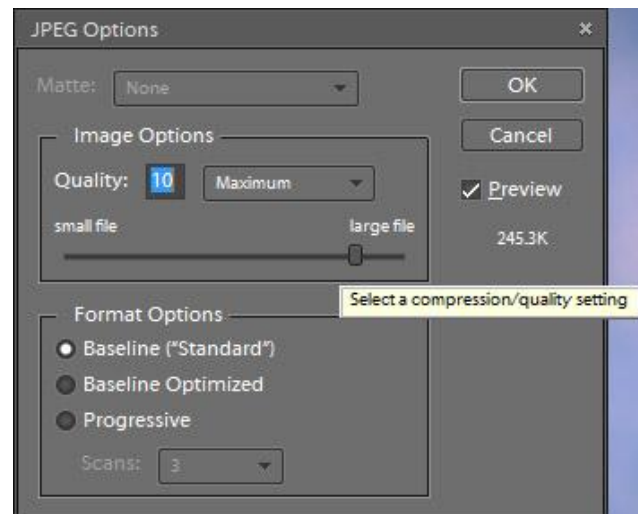
- From the Menu, Select File, Save As..., or Shift-Ctl-S
- Select what folder you are saving your file to
- Choose a filename and file format (PSD, JPG, etc)





# Image Saving

- Under JPEG options, choose a high quality setting – Note how large the resulting file will be



# Helpful Links

## These are all Free!!!

- Raw picture file viewers:

Microsoft Plug-in for Windows XP

<http://www.microsoft.com/downloads/details.aspx?familyid=D48E808E-B10D-4CE4-A141-5866FD4A3286&displaylang=en>

Canon Plug-in for Windows Vista

<http://www.usa.canon.com/consumer/controller?act=DownloadIndexAct>

Nikon Plug-in for Windows Vista

<http://nikonimglib.com/nefcodec/>

Faststone Viewer (excellent for all types and formats, not just raw!)

<http://www.faststone.org/FSViewerDetail.htm>

- Photoshop Elements tutorials:

<http://graphicssoft.about.com/od/beginnerbasics/u/learnthebasics.htm#s6>

# Questions???

- Contact Tony Mistretta at [anthony.mistretta@comcast.net](mailto:anthony.mistretta@comcast.net)
- The Photoshop Elements 6 Book for Digital Photographers (Voices That Matter)  
(Paperback) by *Scott Kelby & Matt Kloskowski*