

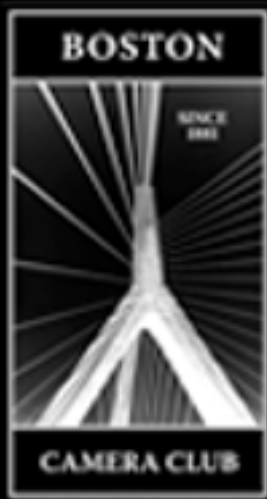
Seventh Annual Multi-Club Competition

Wednesday, May 13, 2026

Boston Camera Club

Gateway Camera Club

Stony Brook Camera Club



Boston Camera Club



- Founded 1881. Second-oldest camera club in U.S.
- 185 members with wide range of abilities and photographic interests
- Weekly club meetings held Tuesdays at 7:00 PM
- Mixture of in-person and online sessions
- Old South Church, 645 Boylston Street, Boston, MA

Regular Club Sessions:

- Digital and Print Competitions
- Book Competition
- Education Sessions with Leading Photographers
- Member Presentations of Photographic Series
- Informal Critique Sessions

Other BCC Activities:

- Photography Exhibitions
- Studio Photography Sessions
- Field Trips / Meet Ups
- Special Interest Groups



Guests and prospective members are welcome!

www.bostoncameraclub.org

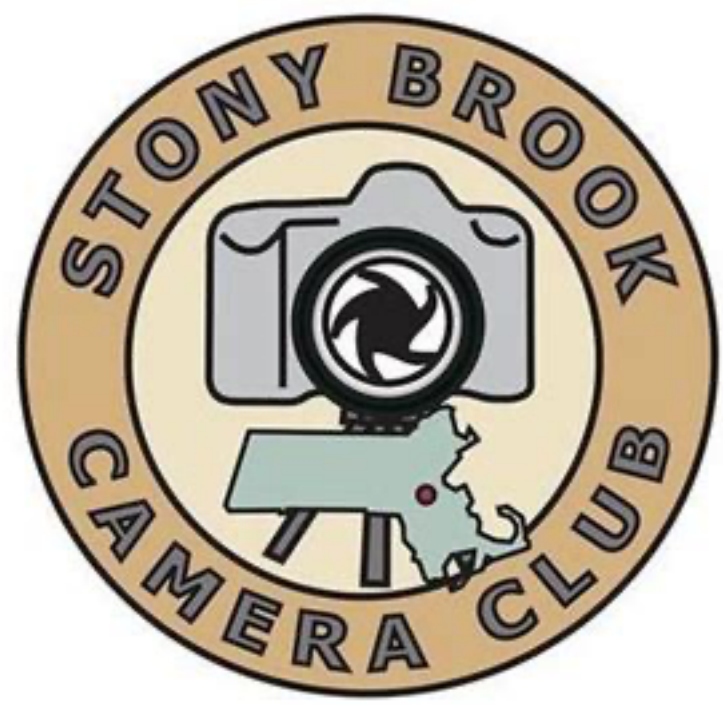


Gateway Camera Club

- Founded in Framingham in 1962, just over 100 members, mostly from MetroWest
- Meeting weekly September through early June on Tuesdays@7:00 PM, alternating between Zoom, in-person presentations and “watch parties” at St. Andrew’s Church, 3 Maple Street, Framingham
 - Guests welcome
 - Please check our website at gatewaycameraclub.org or email us at info.gatewaycc@gmail.com for more information
- Additional in-person activities include field trips and Special Interest Groups (SIGs), including a monthly meeting on using artificial lighting

Upcoming events:

May 19	Polina Plotnikova — Small World: Photographing Ball-Jointed Dolls
May 26	Image of the Year Competition: Judges Larry Dunn, Doreen Sykes & Don Toothaker
June 2	Printed Image Peer Review
June 9	End of Year Competition Awards
June 13	Annual Picnic
June 28	Third Annual International Photo Meeting with Vera International Photo Club, Spain



Stony Brook Camera Club

- Based in Franklin, MA for over 50 years
- www.stonybrookcc.com
- Meetings are hybrid: In-person and on Zoom
- Every Thursday at 7:30 pm, September to June (38 meetings), including:
 - Guest Speakers
 - Internal Speakers
 - Competitions
 - Image Studies
 - Cabin Fever
 - New Member Showcase
 - Women vs. Men Challenge
 - Talk Photography
 - Show & Tell
 - Image Makers
 - Special Programing

Tonight's Competition Format

- Class B Competition
- Class A Competition
- Judges' Announcements
- Club Competition Results
- Judge's Choice Awards

Tonight's Judges

- Jackie Kramer — www.jackiekramerfineart.com/ and www.facebook.com/groups/phlorography
 - Professional Photographers of America Master Photographer, KelbyOne instructor and Lensbaby Ambassador, Jackie runs classes online and conducts in person workshops. Jackie is known for her fine art floral photography and the community she has built internationally through her inspirational and educational Facebook group, Phlorography – Artistic Floral Photography.
- Todd Nettelhorst — www.nettelhorstimages.com/
 - Award-winning commercial photographer, international speaker and Ambassador for Vanguard video, photo and hunting equipment based in Chicago, Todd leads photo workshops, provides personal coaching and holds specialized camera club clinics.
- Tony Sweet — www.tonysweet.com
 - Internationally acclaimed fine art nature photographer and photography coach. Tony Sweet is a Nikon Legend Behind the Lens with fine art photographs published internationally in dozens of outlets and in use by multiple leading brands. Tony and his photography instruction partner Susan Milestone are known for their small-group Visual Artistry photography classes and photo workshops.

Tonight's Competition Categories

Eight Categories, Repeated for Class B and A

1. Black & White Landscape
2. Double Take
3. ICM and/or Multiple Exposure
4. Machinery
5. Minimalism/Simplicity
6. On the Road
7. Softness
8. Textures in Nature

Class B Competition

Intended for Beginner and Intermediate Photographers

Black & White Landscape

Class B

Landscape photography is the art of capturing images of vast or intimate areas in nature and the outdoors in a compelling composition.

The composition can be made even more compelling in black and white as you emphasize elements such as leading lines, shadow, dark and light tones, shapes and textures.

Ansel Adams' iconic images are a good example of compelling B&W landscapes.

Your image must be shades of black, gray and white only. Monochrome images with any other color (e.g., sepia or cyan) are not acceptable.







Sleepy Hollow in Winter
Chuck Carney
Boston



Olympic Vista
Jeff Luth
Gateway



Fishing Stage Newfoundland
Hali Sowle
Stony Brook



Double Take

Class B

Show us something that makes you go, “Huh?”, “Wha???” or maybe even “WTF?”. The image might look ordinary at first, until you realize that there’s something about it that’s a little off and makes you stop and reconsider what exactly you’re looking at, often with a smile, a wrinkled squint or a sense of surprise spreading across your face.

Odd angles and optical illusions might come into play in creating the image or you might create the effect by compositing something in post-processing that is incomprehensible or impossible in real life.







Painted Pipes
Stephanie Sirius
Stony Brook



Sideways
Susan McIntyre
Gateway



*Common Mynas
Communing*
Susan Clare
Boston



Intentional Camera Movement (ICM) and/or Multiple Exposure

Class B

ICM can include any movement that produces intentional blur. It can be a vertical, horizontal, diagonal, circular or any combination of movements.

Multiple exposure (ME) can be done in camera, mobile phone camera apps or in post even if your camera has a multiple exposure feature.

Both techniques offer opportunities for photographers who face challenges creating tack-sharp images.

With both techniques, the emphasis in this category is on creativity, originality and artistic expression.





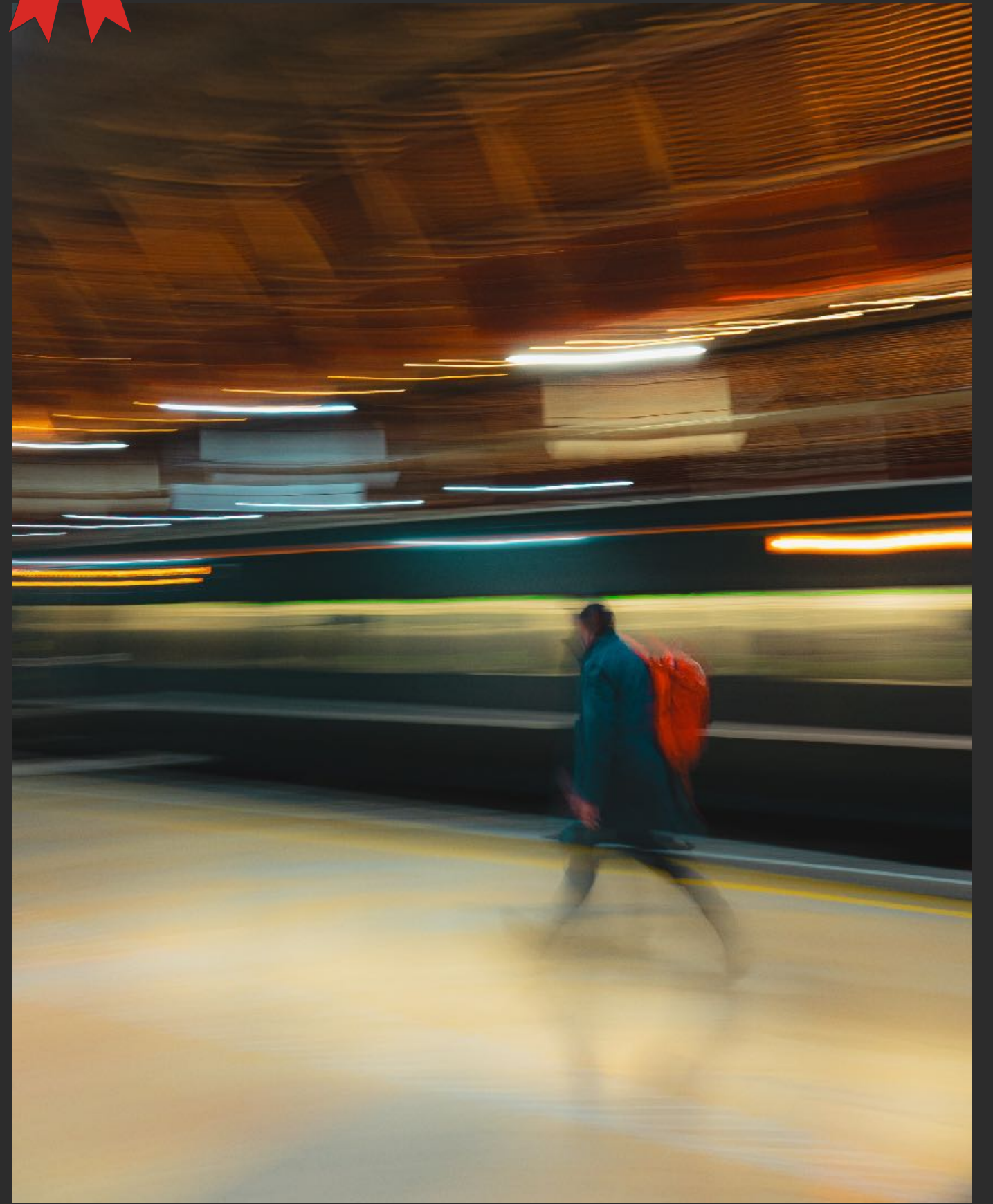




1st *Standing in a Shaft of Light*
Ellen Snyder
Stony Brook



2nd *Paddington Station*
Cynthia Grant
Boston



3rd *Clock*
Bob LaGrange
Gateway



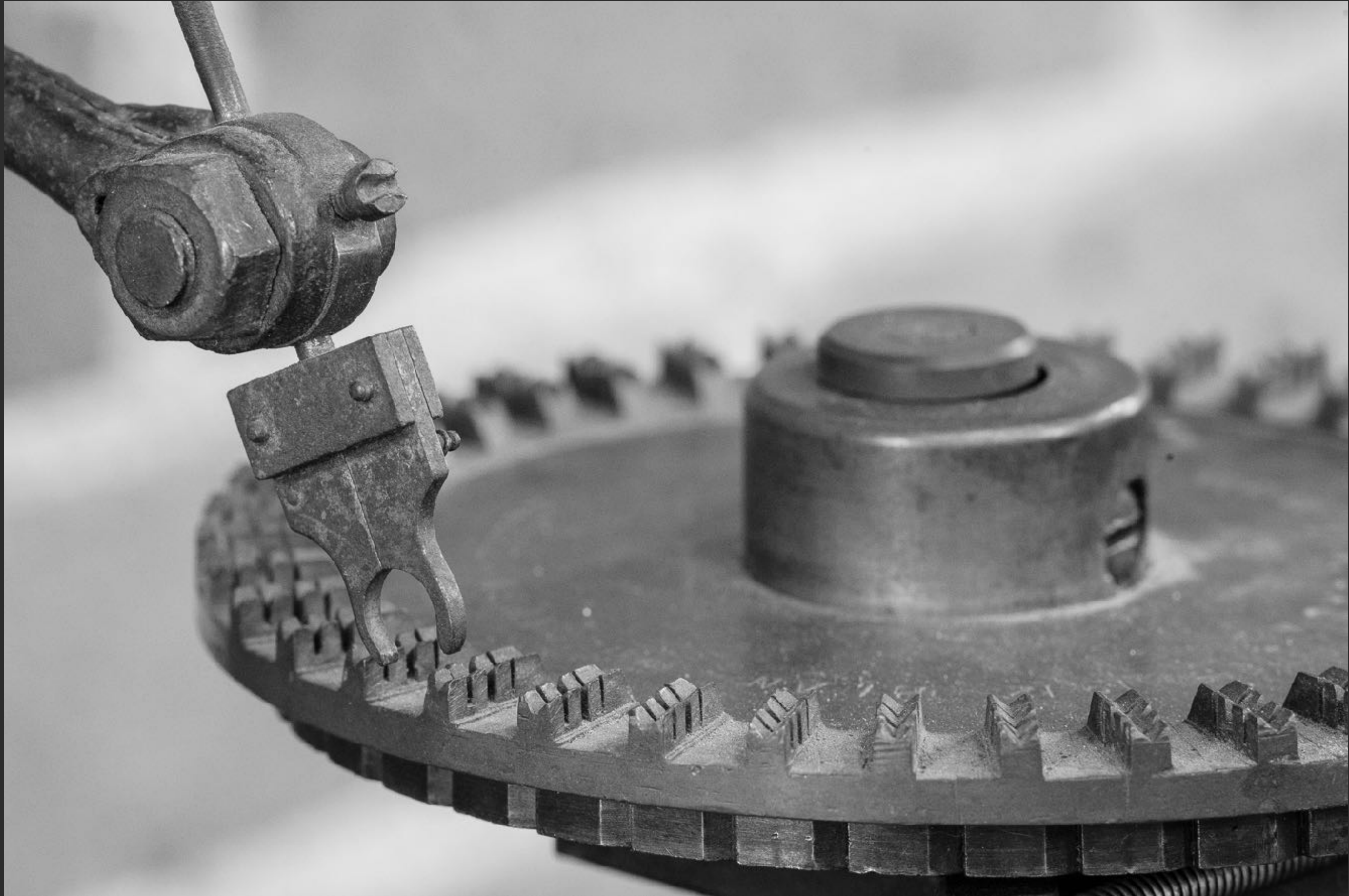
Machinery

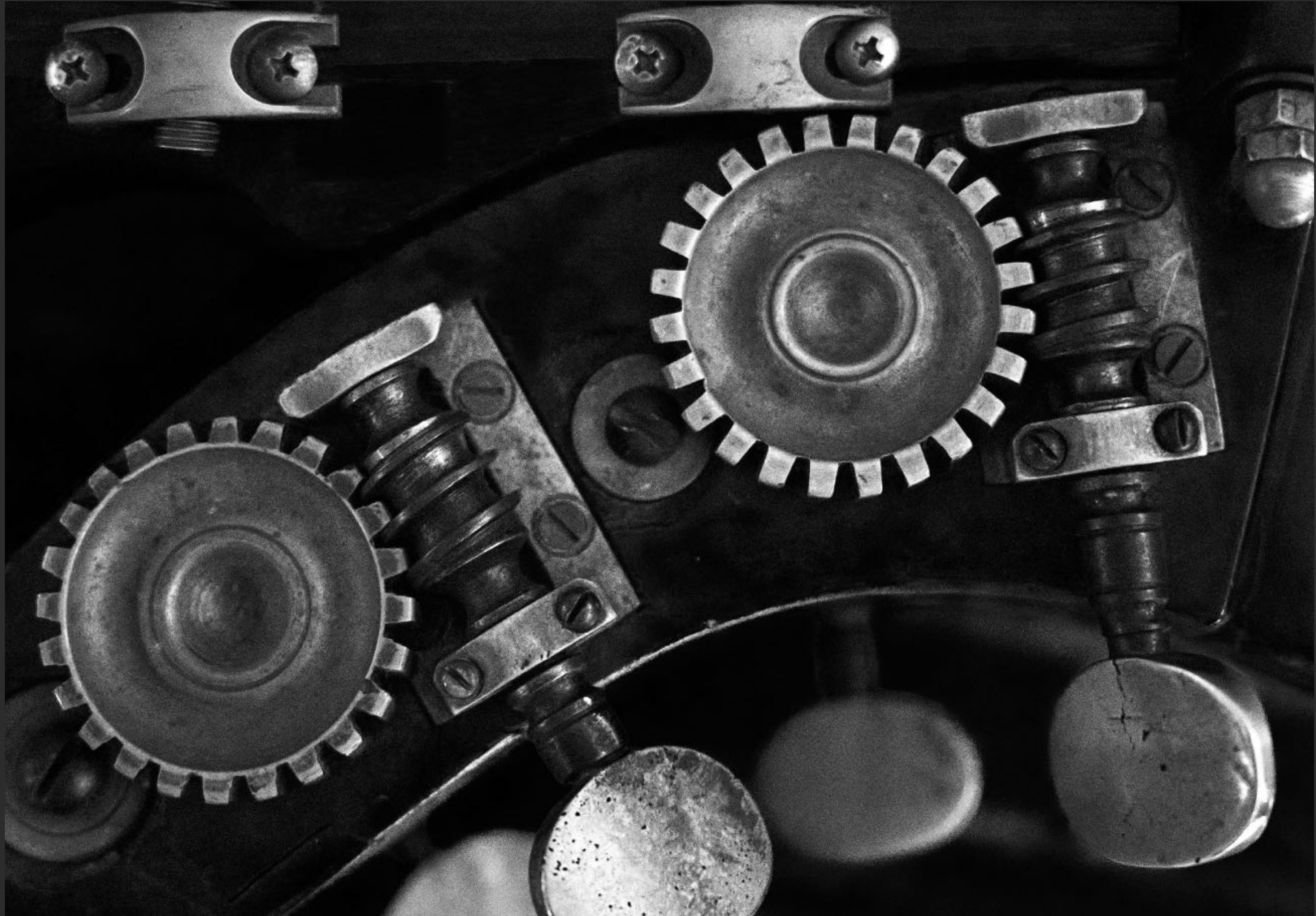
Class B

How do you make photos of machines and industrial subjects interesting? Video can show them in action, but still photography often leaves them looking static.

Can you find interesting lighting, a different angle to shoot from, maybe use a macro or telephoto focal length or find some out of the ordinary setting like an abandoned or historical machine or mill? Including the machine operator or other people in an industrial setting might help, too.

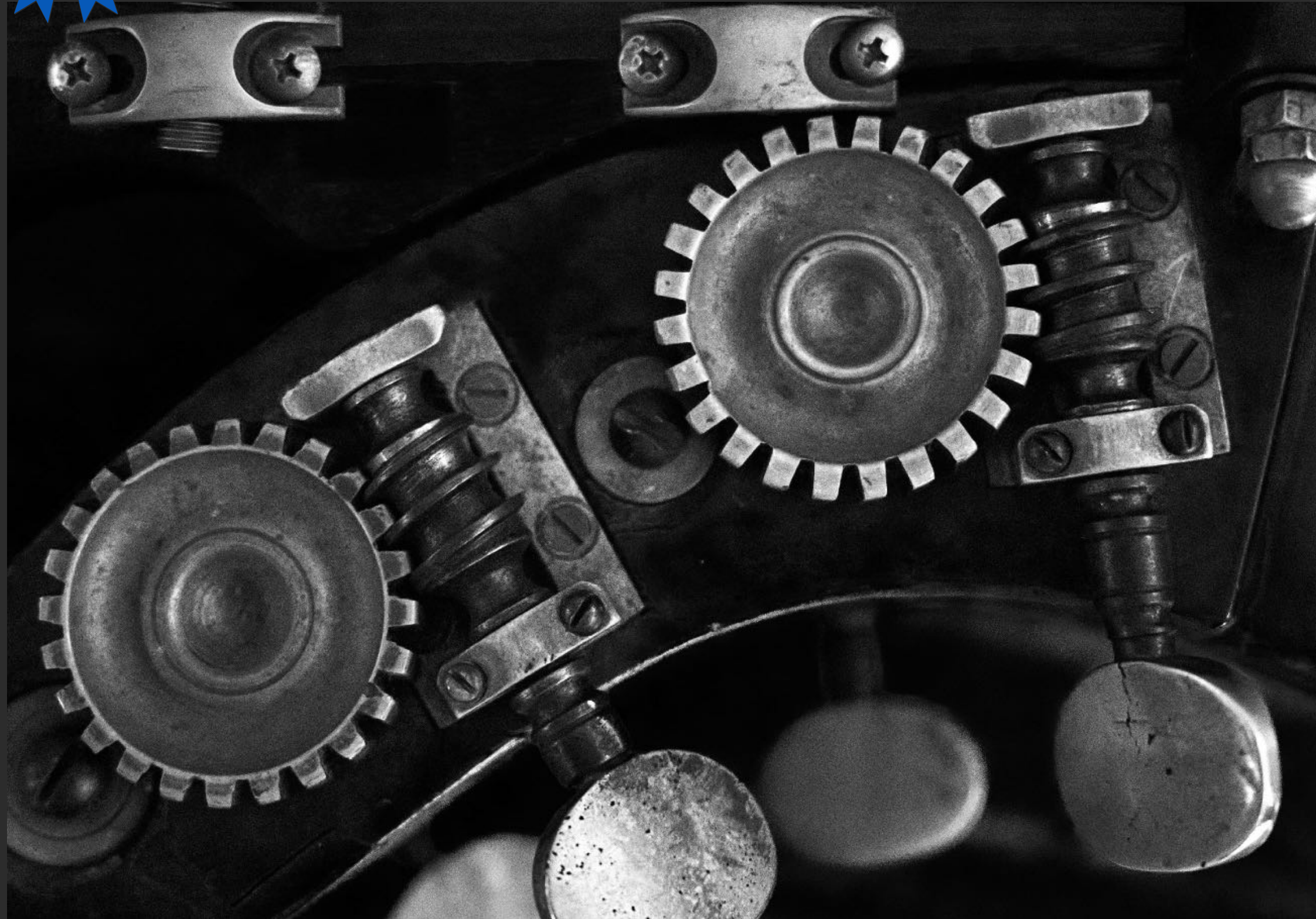
Machines can be simple, like a pulley or lever, or complex, like engines or other manufactured devices. They can be current, obsolete or historical, large or small, bright and shiny or past their prime.





1st

Scroll
Jesse Kieffer
Boston



2nd

Rachet & Pawl
Arthur Barabell
Gateway

NOTE: After the competition, Stony Brook Camera Club discovered that it had inadvertently submitted two images from the same maker, one of which was in this category. As this constituted a rules violation, both images were consequently disqualified and Stony Brook was given the highest (worst) possible judges' ranking score possible in each of the two impacted categories.

Minimalism/Simplicity

Class B

Minimalist photography is a style that prioritizes simplicity, focusing on capturing impactful images with minimal elements and a clean, uncluttered aesthetic. It emphasizes a sense of calmness, peacefulness, and order, achieved by reducing the image to its essential components.







Lone Canoe
Scott Carl
Boston



*Moon on a Cold
Clear Night*
Deb Valle
Gateway



Peace Lily
Barbara Asacker
Stony Brook



On the Road

Class B

Whether or not they show a road or are taken from one, photographs in this category should capture the sense of adventure, mystery, and discovery that ground-based travel can bring.

This could include landscapes along a highway, elements of the overall experience of travel, interesting people encountered or sights like gas stations, roadside diners, quirky signs, abandoned structures, wildflowers in unplowed fields, sunsets and sunrises over the crest of a road, etc.

Whether taken in rural, small town, suburban or urban settings, it's the mood of discovery while traveling along a street, road, highway or byway that's most important to capture.









Watch for Snakes
Jason Ross
Boston



Barn by the Roadside
Linda Lancz
Gateway



*Park City
Cattle Road*
George Komarnicki
Stony Brook

Softness

Class B

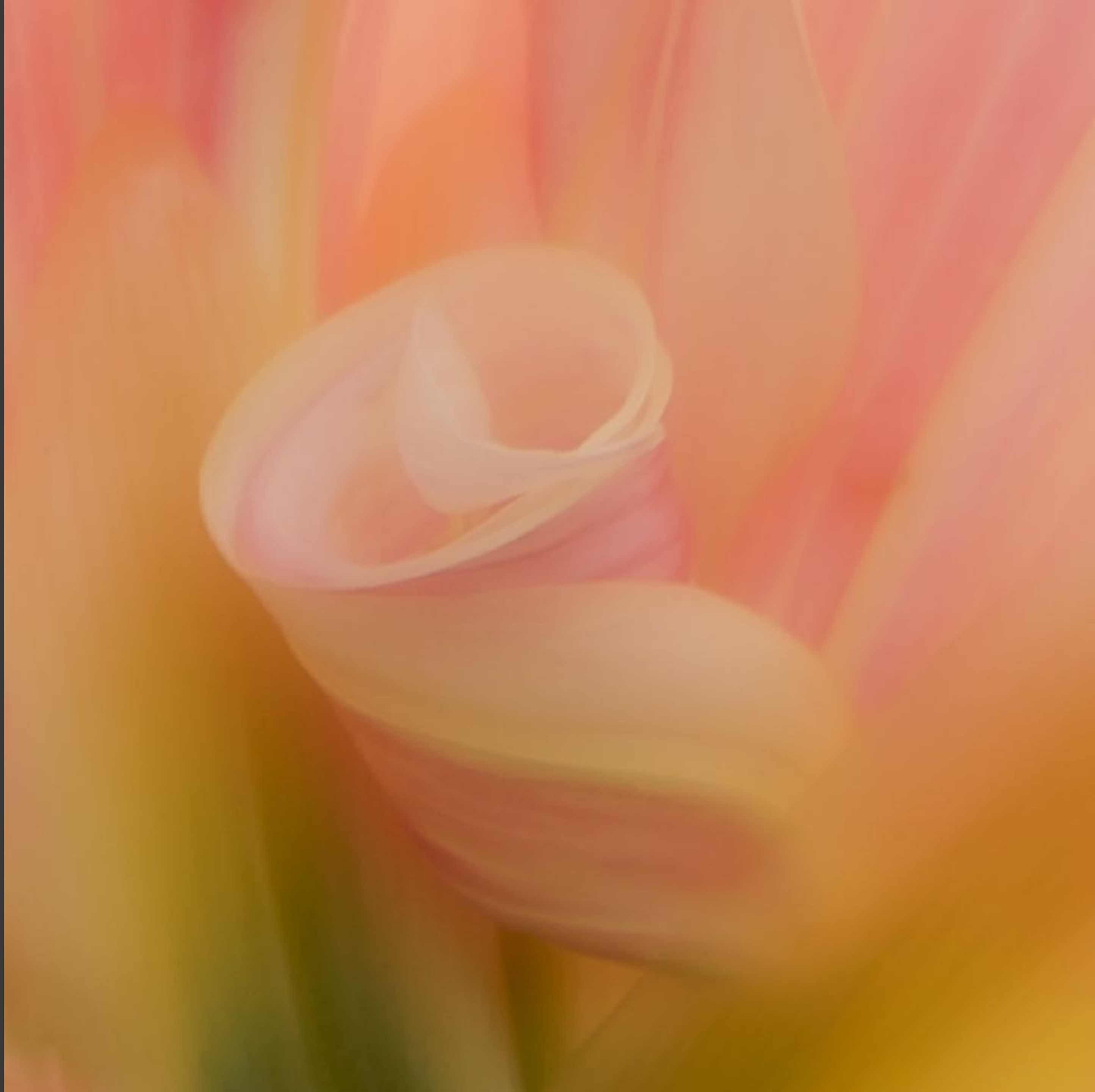
Create an image with an effect or feeling is “soft.”

This can be based on animate or inanimate subjects or a by employing a technique that emphasizes softness, either in-camera or in post-processing.

Typical examples include kittens, feathers and soft-focus scenes, such as with a Lensbaby or with techniques like applying a Gaussian blur or manipulating the contrast, clarity, sharpness and noise reduction sliders.





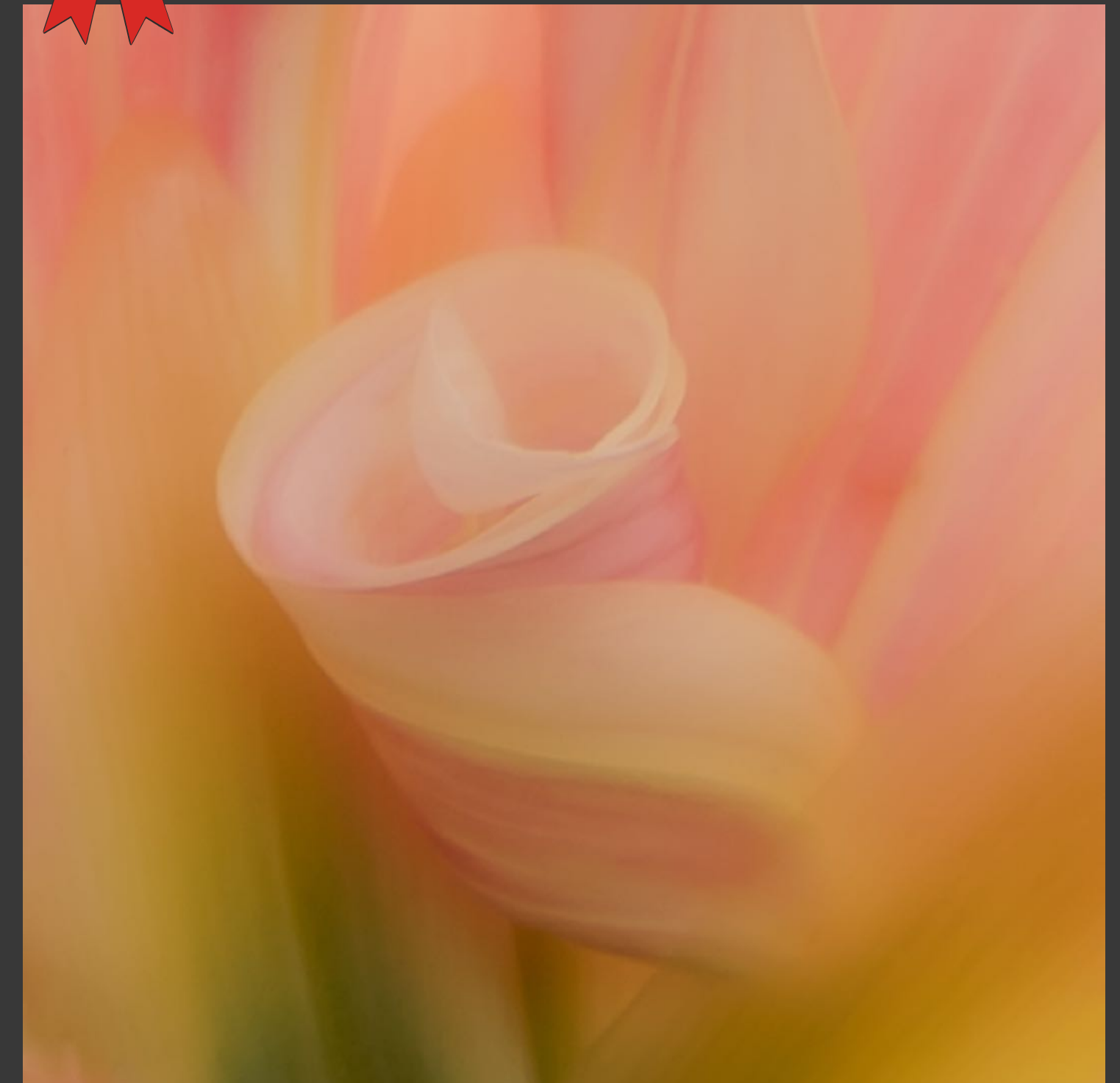




Swan Baby
Pamela Naab
Boston



Peace Lily
Barbara Asacker
Stony Brook



Spring Blossom
Mary O'Brien
Gateway



Textures in Nature

Class B

Texture may not be the first thing we associate with nature photography, but it's there.

Texture can be captured in close-up, macro and even microscopic shots of leaves, fungi, moss, tree bark, frost, skin and feathers, among other small subjects, or in mid-range and grand vistas of water, rippling sand, forest canopies, flocks of animals and birds and rock formations.

Your challenge is to find it and draw the viewer's eye to it in a way that makes it easy for them to imagine they can feel it for themselves.

Other elements can be present, but it needs to be evident that the texture you've captured is what makes your image compelling.









A Universe Inside a Poppy
Lily Hughes-Robinson
Boston



Cone Flower
Brian Doherty
Stony Brook



Water Warts
Alan Steacy
Gateway



Class A Competition

Intended for Advanced Photographers

Black & White Landscape

Class A









Belvedere
David Long
Boston

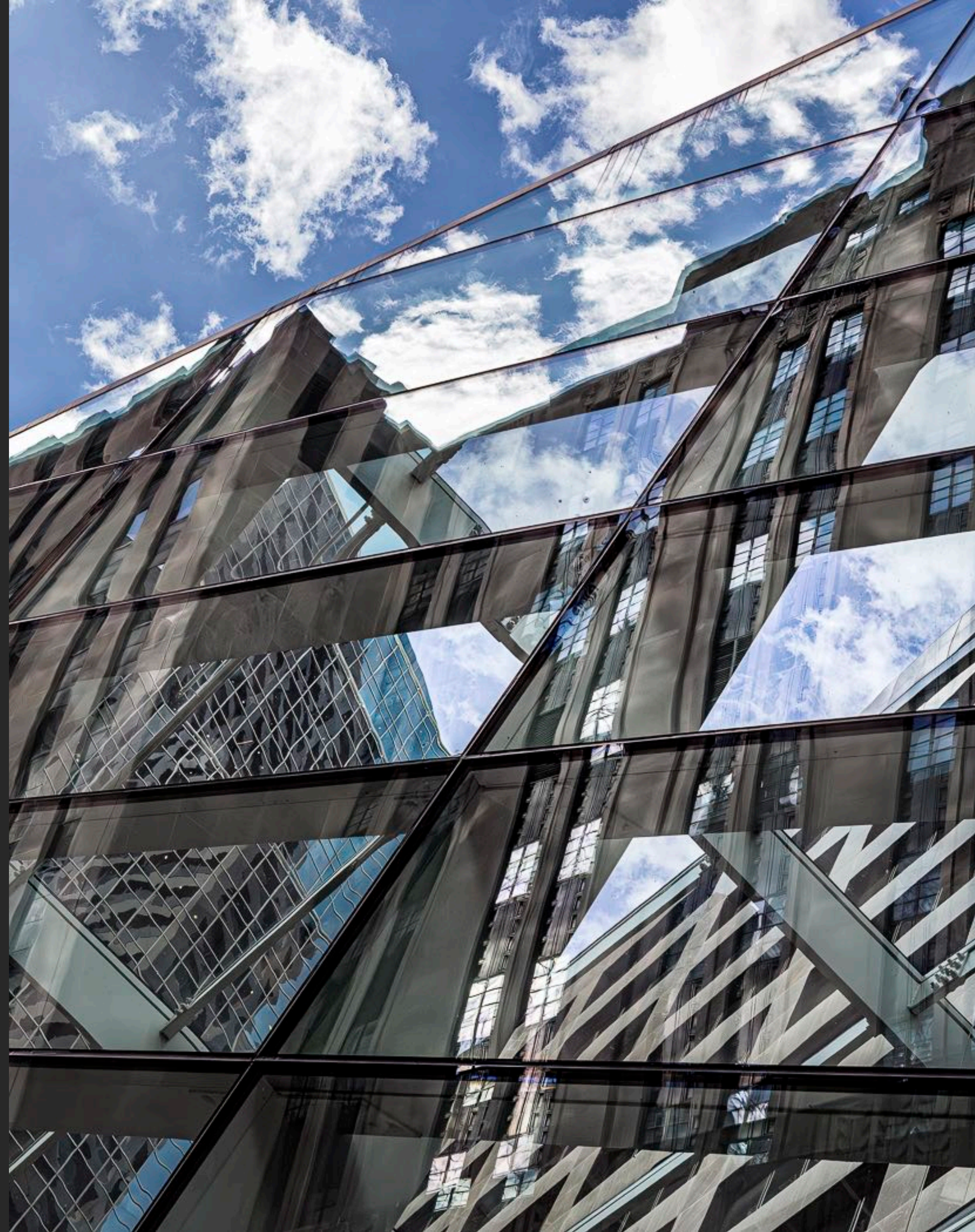
Arches National Park Sky
Mark Landman
Stony Brook



Down the Road B&W 2
Andrea Gardner
Gateway

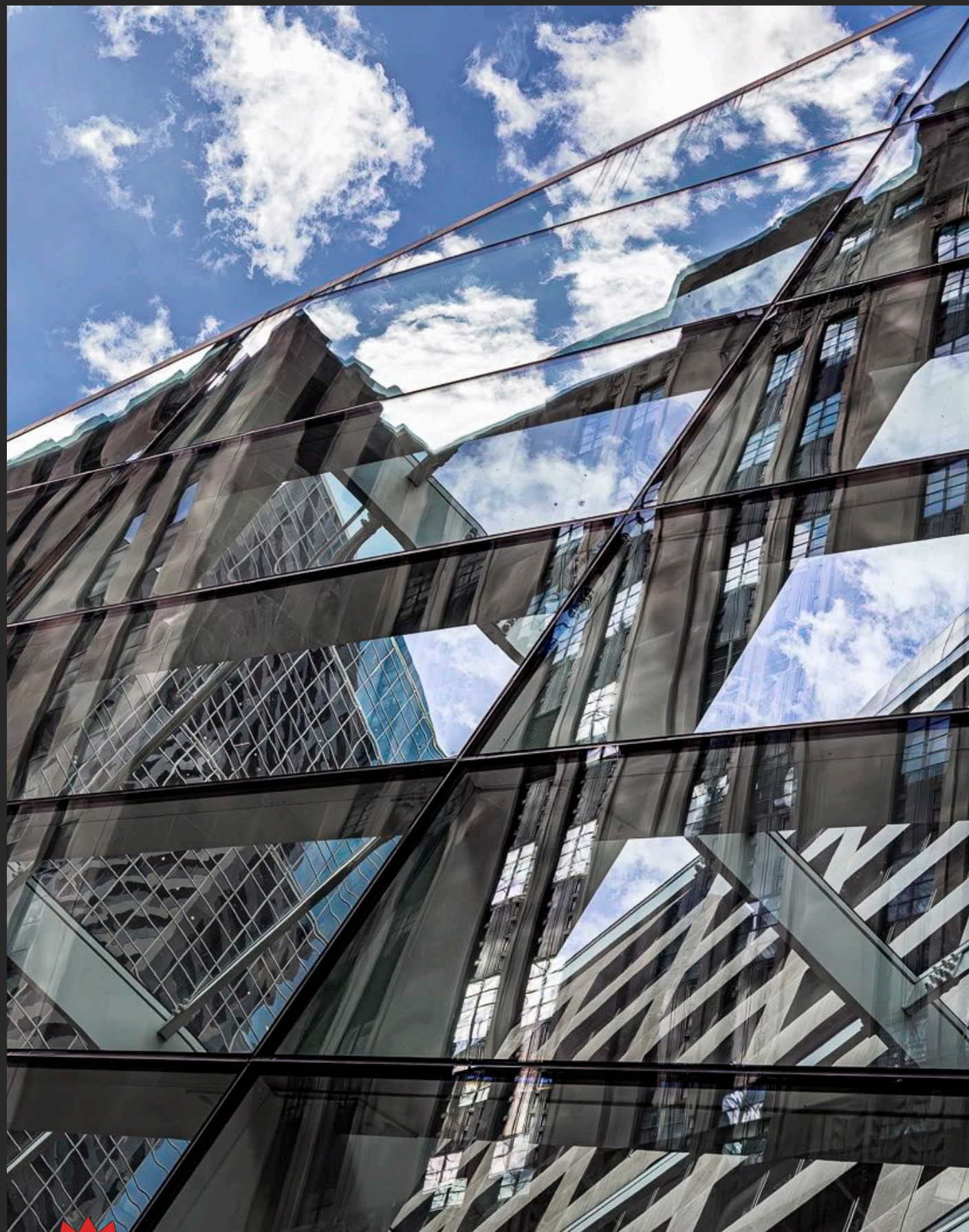
Double Take

Class A









2nd *Windows Everywhere*
Lois Galluzzo
Gateway



3rd *Feathered Sky Patrol*
Nichole Mordechai
Boston



Keeping Cozy
Tony Mistretta
Stony Brook



Intentional Camera Movement (ICM) and/or Multiple Exposure

Class A





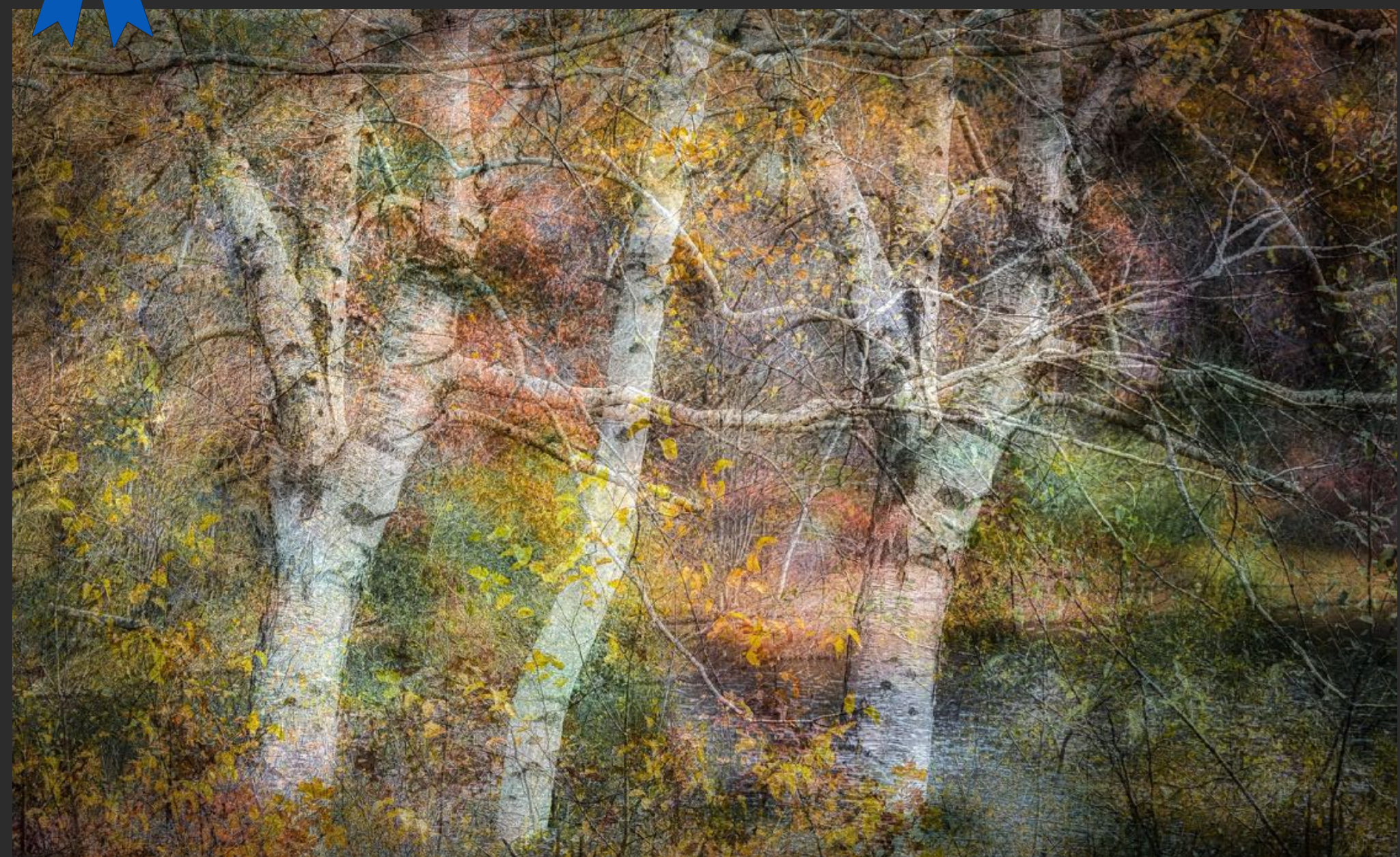




2nd *Bobby Socks*
Janet Walton
Stony Brook



White Birch Trees on Houghton Pond
Phil Nardozi
Boston



3rd *Stroll Down Church Street*
Beth DeBor
Gateway

Machinery

Class A







*At Sturbridge
Sawmill*
Erin Lamb
Gateway



Moving Machinery
Eldad Cohen
Boston

NOTE: After the competition, Stony Brook Camera Club discovered that it had inadvertently submitted two images from the same maker, one of which was in this category. As this constituted a rules violation, both images were consequently disqualified and Stony Brook was given given the highest (worst) possible judges' ranking score possible in each of the two impacted categories.

Minimalism/Simplicity

Class A









Solitary Vase
Ellen Kawalder
Stony Brook



House in the White
Yair Melamed
Boston



The Horse's Mane
Nanda Hrul
Gateway



On the Road

Class A







1st

Atlas Mountains, Morocco

Janet Casey
Stony Brook



On the Road
Paul Sandler
Stony Brook

3rd



Tiger Crossing
Suzanne Hirschman
Gateway

2nd



Softness

Class A









Softness 2
Cynde Cusack
Stony Brook



Soft Pink
Joni Rich
Gateway



Feathers in a Winter Garden
Suzanne Teegarden
Boston



Textures in Nature

Class A







Lizard Skin
Tom Hill
Boston



Bodnant Hostas
Greg DeBor
Gateway

Pinecones
Paula Fahey
Stony Brook



Next . . . Club Competition Results

In the meantime, a word from our judges . . .

Jackie Kramer

<https://www.jackiekramerfineart.com/>

<https://www.facebook.com/groups/phlorography>



Todd Nettelhorst

<https://nettelhorstimages.com/>



Tony Sweet

www.tonysweet.com

email: tony@tonysweet.com



My new book:

**The Color of Water Kickstarter Project
(One month to go!)**

<https://tonysweet.com/books/the-color-of-water/>

Club Competition Results

Class B

Class A

Overall Results

Club Results

Congratulations, Stony Brook, on your first Overall win!

	Club	Class B	Class A	Overall
1st	 Stony Brook	48	38	86
2nd	Boston	44	47	91
3rd	Gateway	52	59	111

And congratulations, Boston Class B shooters for your Class win!

NOTE: Points are based on cumulative rankings within category. Low score wins.

Judge's Choice Awards

Our judges' personal favorites in each class, across all categories

Judge's Choice, Class B – Unanimous (All 3 Judges)



Lone Canoe
Scott Carl
Boston
(Softness)

Judge's Choice, Class A – Unanimous (All 3 Judges)



Belvedere
David Long
Boston
(Black & White
Landscape)

A Special Announcement . . .

Next Year's Categories!

For images captured from April 1, 2026 to March 31, 2027

1. America at 250
2. Around the Table
3. Cars
4. Color in Nature
5. Geometry
6. Long Exposure
7. Silhouette
8. Through the Looking Glass

Thank You!

Judges

- Jackie Kramer — www.jackiekramerfineart.com/ and www.facebook.com/groups/phlorography
- Todd Nettelhorst — www.nettelhorstimages.com/
- Tony Sweet — www.tonysweet.com

Congratulations!

Finalists

Boston

Scott Carl
Chuck Carney
Susan Claire
Eldad Cohen
Cynthia Grant
Tom Hill
Lily Hughes-Robinson
Jesse E Kieffer
David Long
Yair Melamed
Nicole Mordecai
Pamela Naab
Phil Nardozzi
Jason Ross
Paul Sandler
Suzanne Teegarden

Gateway

Arthur Barabell
Beth DeBor
Greg DeBor
Lois Galluzzo
Andrea Garder
Bob LaGrange
Suzanne Hirschmann
Nanda Hrul
Erin Lamb
Linda Lancz
Jeff Luth
Susan McIntyre
Mary O'Brien
Joni Rich
Alan Steacy
Deb Valle

Stony Brook

Tom Amsterburg
Barbara Asacker
Janet Casey
Ginny Castro
Cynde Cusack
Brian Doherty
Paula Fahey
Ellen Kawadler
George Komarnicki
Mark Landman
Tony Mistretta
Deboray Shunney
Stephanie Sioras
Ellen Snyder
Hali Sowle
Janet Walton

Thank You!

Competition Team

Boston

Kathy Barry
Bert Halstead

Gateway

Beth DeBor
Greg DeBor
Charlene Gaboriault
Andrea Gardner
Susan McIntyre
Joni Rich

Stony Brook

Charlene Gaboriault
David Marshak
Mark Landman
Ed Szymanski

**And thank you to all the members who submitted and voted
and to all who attended tonight's show!**

Stay tuned for more announcements regarding Multi-Club 2027!!